





## fecostruct

### Glasvision rahmenlos

#### Glaswand:

Doppelverglasung :  
Structural-Glazing-Verfahren  
ESG oder VSG 6 + 8 mm

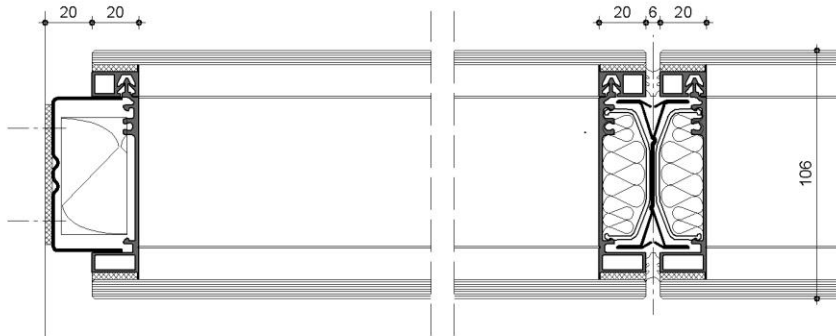
#### Türelement:

Glastüre:  
60 mm oder Wandstarke Türe  
Glas ESG 6 + 8 mm

#### Raster:

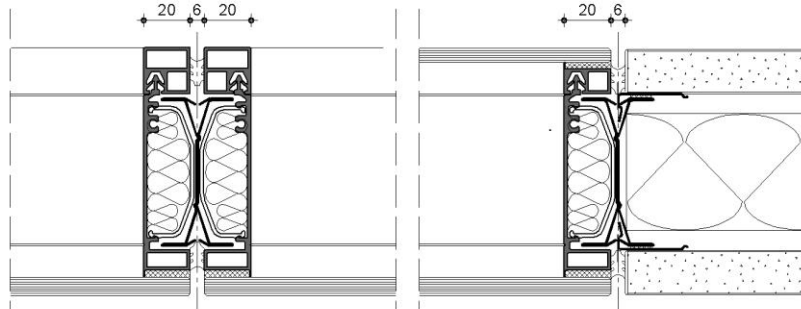
Standard 1000 / 1200 mm  
individuell planbar

fecostruct



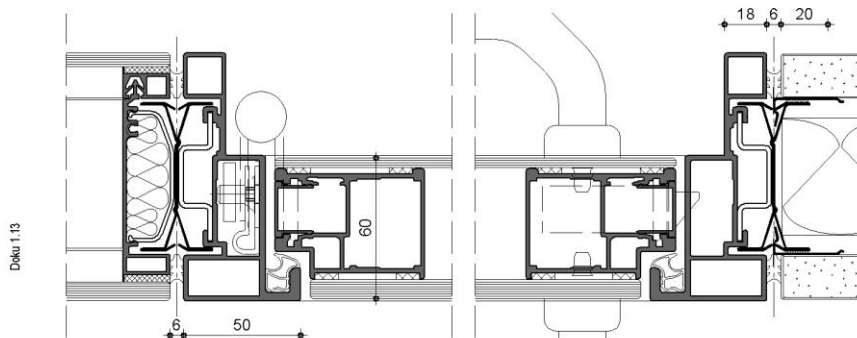
Wandanschluss M 1:2

Verglasung M 1:2



Einscheibenverglasung M 1:2

Verglasung / Vollbeplankung M 1:2

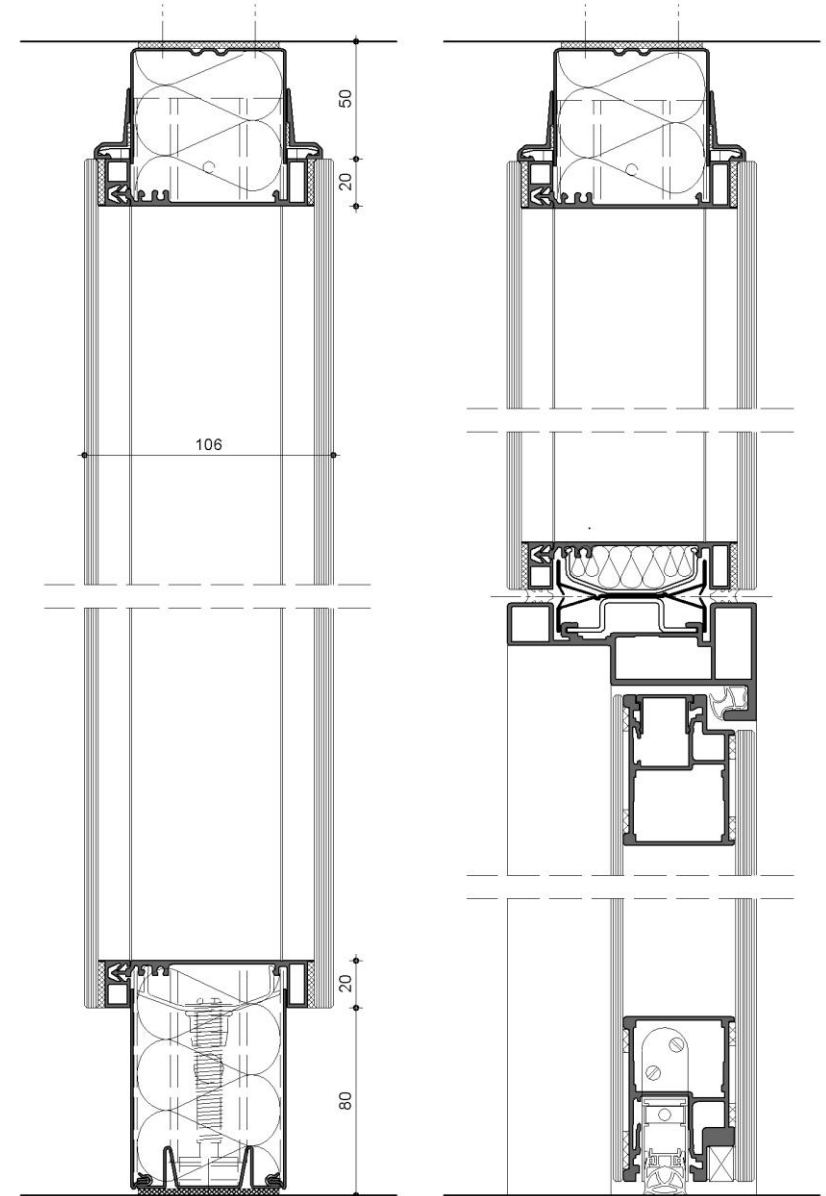


Doku 1.13

Verglasung / Türzarge M 1:2

Türzarge/ Vollbeplankung M 1:2

fecostruct



Doku 1.13

Verglasung M 1:2

Türelement M 1:2